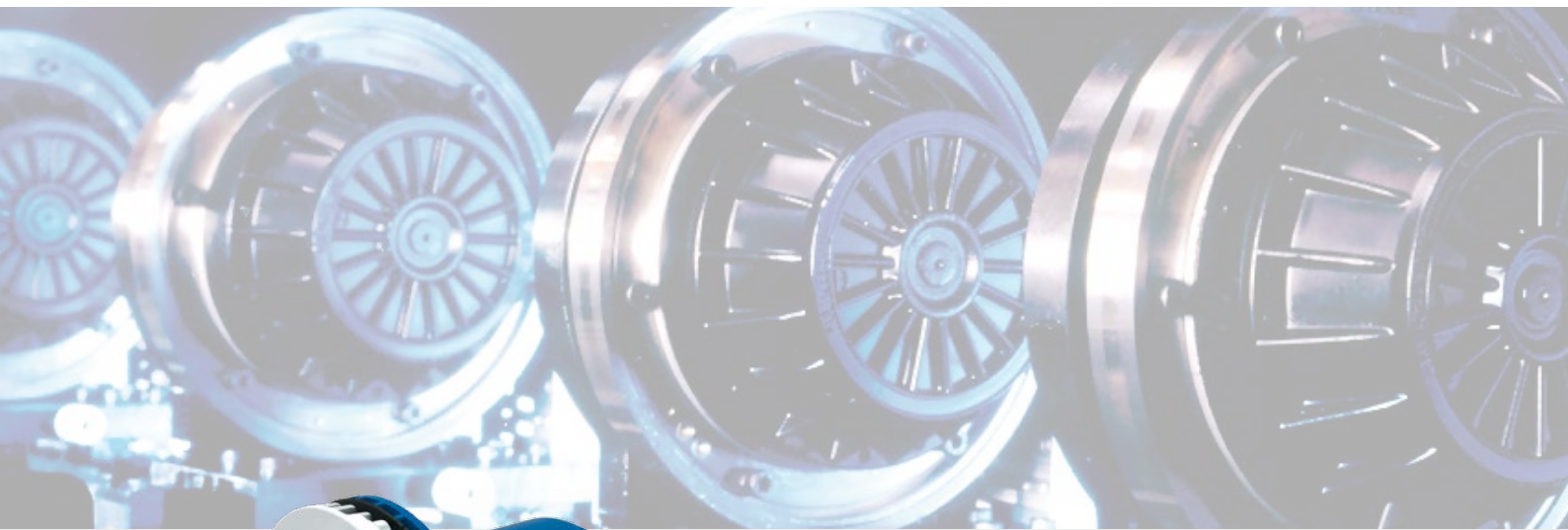




Movement by Perfection



The Royal League in ventilation, control and drive technology



## customized drive solutions

with external rotor motors

# Tailor-made drive concepts

As the world's leading system supplier in the field of fans and drives with matching control technology, ZIEHL-ABEGG offers innovative solutions for many industries.

We are a reliable innovation partner to many companies and rely on our decades of product experience in drive technology with special areas of application such as vehicle construction, wind power stations, agriculture, the chemical industry or mechanical engineering.

With our wide range of products and our more than 300 man strong development team, we are able to flexibly create application-specific solutions.

Our world-wide sales and production network provides you with our services locally.



## Auxiliary drives for printing machines

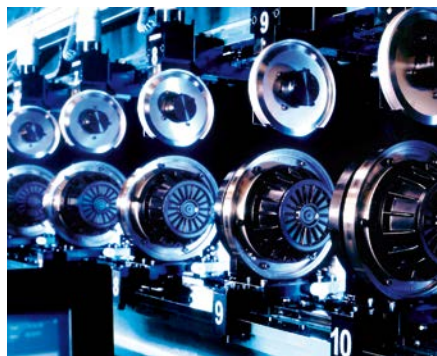
- Ink ductor drives
- Feed and discharge drives
- Dampener drives
- Coater drives
- Main drives

## Auxiliary drives for the paper industry

- Longitudinal and cross-cutters in paper cutting machines

## Bowling alley drives

- Ball accelerator drives



# Innovative drive technology

ZIEHL-ABEGG AC external rotor motors are ideal at combining the advantages of compact and space-saving installation with the tried-and-tested drive concept of a wear-free squirrel-cage induction motor or a maximum efficiency EC motor.

In connection with the appropriate integrated or external frequency inverters or EC Controllers, we offer tailor-made and innovative drive solutions for many different application areas.

## ECblue drive system

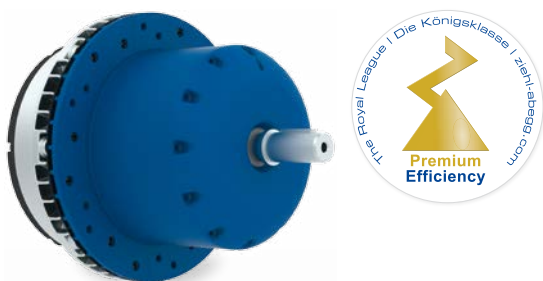
**EC motor with highest efficiency and integrated EC Controller**

- Sizes design MK: 74, 90, 116, 152
- Line voltage: 1~ 200...277 V 50/60 Hz, 3~ 380...480 V 50/60 Hz, 3~ 200...240 V on request
- Rated power max. 5.3 kW
- IE4 efficiency class

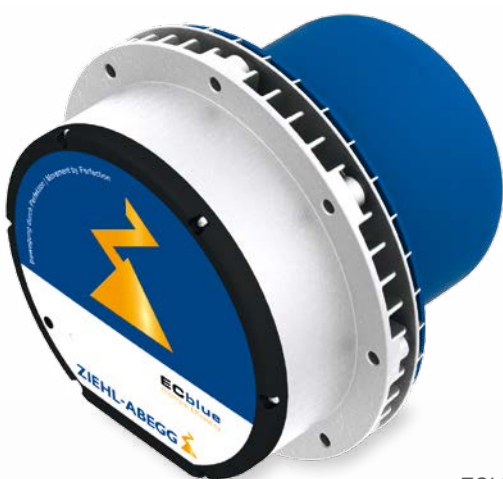
## Motors in AC technology

**Three-phase or single-phase alternating current motors  
Optionally with integrated speed transmitter**

- Sizes design MK: 74, 77, 85, 92, 106, 115, 137, 165, 205
- Sizes design MW: 106, 137, 165
- Pole numbers: 2, 4, 6, 8, 10, 12
- Rated power: 0.05 kW – 6.0 kW



AC motor type MK



ECblue



AC motor type MW



*Fcontrol*

## Frequency inverter Fcontrol

**Innovative frequency inverters with integrated all-pole effective sine filter**

- Available as a basic version or with universal control function
- Unshielded and long motor cables
- Gentle motor operation even by motors which are not designed for frequency inverter operation
- Trouble-free parallel operation of motors
- Available with IP54 and IP20 degree of protection
- Rated current up to 50 A
- Available as 1~ Version (1~ fed and 1~ output) up to 10 A



*Icontrol*

## Frequency inverter Icontrol

**Standard frequency inverter generally for frequency inverter-compatible motors.**

- Cost-optimised frequency inverter
- With integrated main switch (optional)
- Available in multifunctional and basic versions
- Available with IP54 and IP20 protection
- Rated current up to 62 A (for IEC standard motor up to 30 kW)



*PMcontrol*

## EC-Controller PMcontrol

**For controlling highly efficient permanent magnet motors**

- Sensorless, quiet motor control
- Basic version, functionally extendable by add-on modules
- Available IP54 protection
- Rated with up to 32 A (other sizes under development)



*ECblue with integrated add-on module*

## Application-specific add-on modules

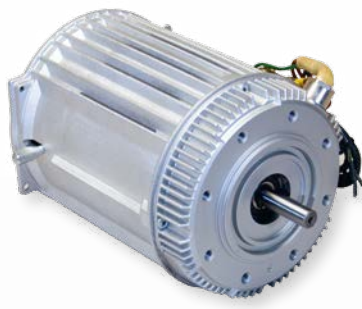
**Pluggable add-on modules for functional expansion of the frequency inverters Icontrol basic, Fcontrol basic and ECblue motors.**

- Functional extension: bus systems, control functions
- Customised solutions can be achieved easily with add-on modules.



### Compressor drives

- Motors for speed controlled compressors



### Drives for vehicle technology

- Travel and steering drives for factory floor vehicles
- Test bench drives
- Pump drives (e.g. cooling water pumps)



### Other application examples

- Grinding belt drives
- Agitator drives
- Polishing machines
- Vibrating machines and many more



# The Royal League



© ZIEHL-ABEGG SE - 00701387 - EN - MA - 11/2013 - 1.000 - Kunkler & Ewald - Subject to technical modifications

**ZIEHL-ABEGG** 