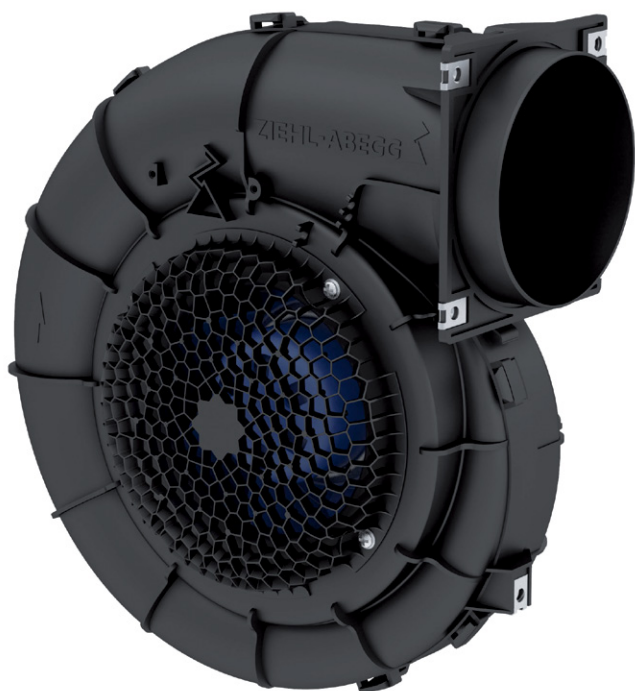


Movement by Perfection



The Royal League in ventilation, control and drive technology



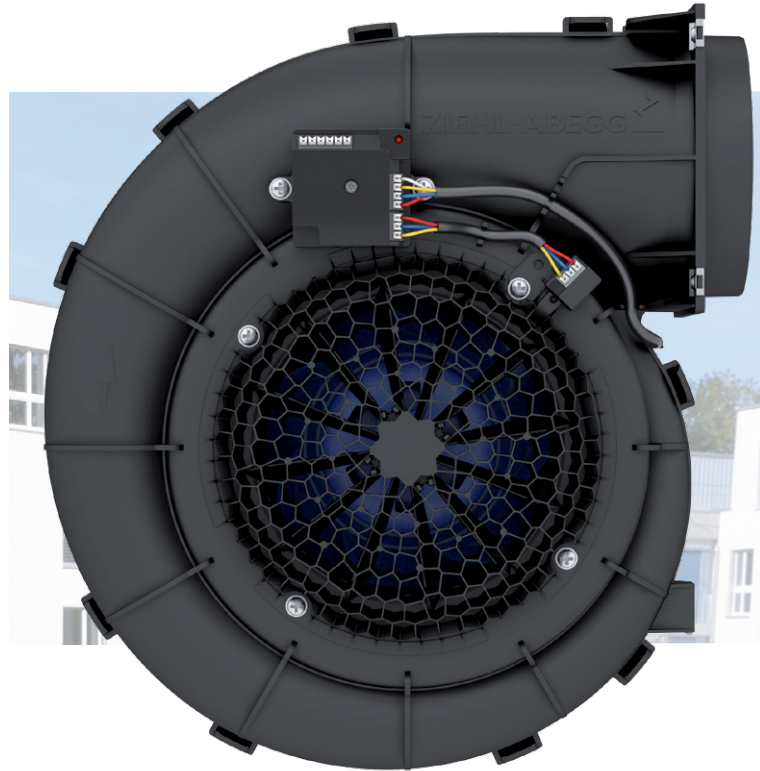
RG16V **Spiralvent**

Lightweight scroll housing fan system

RG16V Spiralvent

The ZAvblue RG16V scroll housing fan system, developed in accordance with the biomimicry principle, cannot be beaten in terms of efficiency. The precisely coordinated components deliver absolute top results even when used in narrow installation situations, and provide very quiet, energy-saving operation. The unique components are significant and are accompanied by a newly designed sensor technology that provides the overall system with constant air flow measurements, the possibility of a permanent constant air flow and sustainable, very economical operation due to the constantly adjusted air flow.

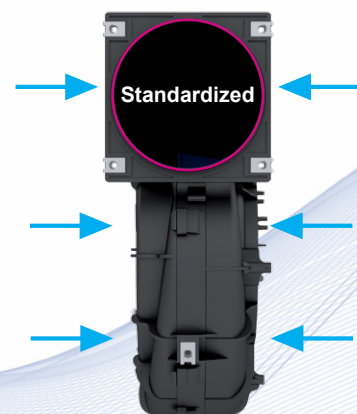
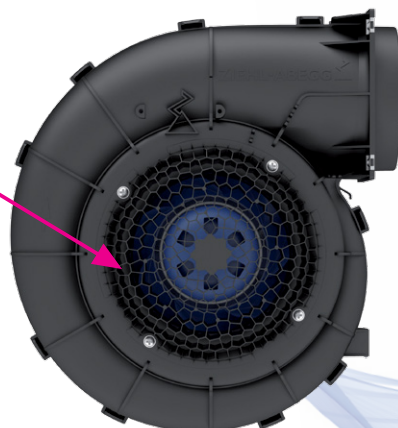
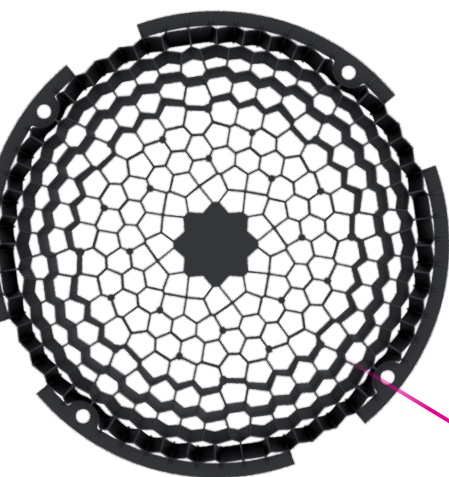
With the newly designed backward-curved impeller with its lightweight construction and fewer blades, combined with the specially optimized and sensitively adapted scroll housing with standardized air outlet, and the high efficiency ECblue energy-saving motor, the intelligent ZAvblue RG16V fan system is the new benchmark in its applications.



RG16V Spiralvent – for optimum indoor air

Exceptional advantages thanks to optimized scroll housing:

- Maximum static system efficiency up to 57,7%
- Incomparably quiet
- Biomimicry principle design of the overall system - efficient, sustainable, maximum energy saving potential
- Space-saving with integrated cable management
- Outlet design prepared for O-ring in accordance with DIN 3771

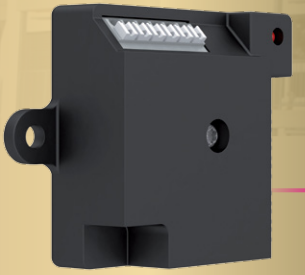


Drop-in replacement

for “anytime replacement”

Up to **57.7%** efficiency,
economical, quiet and climate-friendly operation

Coming soon



New sensor technology for constant air flow at all times

even in narrow installation situations

Scroll housing

Optimized for best acoustics



Sensorbox

Optimum indoor air and constant air flow - continuous temperature, pressure and humidity measurement

ZAvblue

biomimicry centrifugal fan - small, compact, backward curved, fewer blades unbeatable performance

ECblue Technology

Intelligent energy-saving motor - climate-friendly, maximum efficiency, greatest energy saving potential

ZAflow

Improves the inflow situation to reduce acoustics

Applications: • Ventilation technology and heat pumps in single family houses and apartments
• Air curtains • Fan Coil Units • Electronic cooling for e.g. data centers and switch cabinets • Office Phone Booths • Air filters • Kitchen exhaust units • Car charging stations

The Royal League

